

Mars Pro

Industrial SLA 3D Printer



Grade 00 Marble Platform | Intelligent VarioSpot Model | EU CE and US FCC Certification

— Mars Pro Industrial SLA 3D Printers

With the rapid growth and demand of 3D printing technology in the market, SoonSer has finally launched an upgraded series of SLA 3D Printing Product named Mars Pro, which was built based on accumulated experience over the past few years. Featuring high stability and precision, easy operation and maintenance, Mars Pro can be applied in various fields, such as Industrial model manufacturing, fixture production, rapid precision casting, medical treatment and health and so on.



Mars Pro-600



Mars Pro-600S

■ Stability

- The whole system adopts distributed and modular design, which improves the working stability and expansibility of the control system.
- The movement platform adopts grade 00 marble platform to ensure long-term stability.
- Laser, galvanometer and electrical control components are supplied by reputable brands from both local and overseas.

■ Usability

- Self-developed controlled software built with a concise interface that comes with a list of package functions, guided SOP (one button for each function such as Ready and Print) to simplify the process.
- Features such as process parameters, optimization algorithms, automatic recognition of model and auto-processing parameters to enhance the performance and achieve a higher success printing rate.
- Modular design approach with both reliable hard and software with each performs optimally to achieve maintenance excellence of the product.

■ High Precision and Efficiency

- Self-developed intelligent variable spot system to complement the high speed scanning and scan algorithm thus increase the process efficiency.
- High precision liquid level sensor which further ensures the accuracy of liquid level in the printing process.
- High precision calibration system improves the printing accuracy of the whole format model.

■ Safety

- We fully consider safety into the machine design, and add the function of door interlock.
- EU CE and US FCC certification.

Application Direction



Tire Model Sample Piece

Industrial Field

Auto Parts Manufacturing
Home Appliance Parts
3C Electronic Products



Building model of real estate company

Cultural And Creative Industries

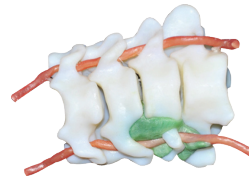
Technology Model
Architectural Model



Precision model manufacturing

Manufacturing

Fixture
Investment Casting
Vacuum Casting Model



Preoperative communication model

Medical Treatment And Health

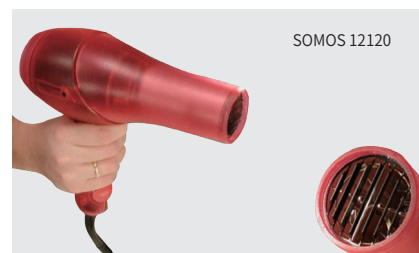
Preoperative Surgical Rehearsal
Rehabilitation Appliance
Surgical Guide

Technical Specification

Model	Mars Pro-600	Mars Pro-600S	Mars Pro-850	Mars Pro-1600
Maximum part volume	600×600×400mm	600×600×400mm	850×850×500mm	1600×800×600mm
Accuracy	±0.1mm (L<100mm); ±0.1%×L (L≥100mm)	±0.1mm (L<100mm); ±0.1%×L (L≥100mm)	±0.15mm (L<100mm); ±0.15%×L (L≥100mm)	±0.2mm (L<100mm); ±0.2%×L (L≥100mm)
Layer thickness	0.05mm~0.20mm Optional	0.05mm~0.20mmOptional	0.05mm~0.20mm Optional	0.05mm~0.25mm Optional
Spot size	0.08~0.8mm (Variable spot mode)	0.08~0.8mm (Variable spot mode)	0.08~0.8mm (Variable spot mode)	0.08~0.8mm (Variable spot mode)
Format	*.stl/*.slc/*.cli	*.stl/*.slc/*.cli	*.stl/*.slc/*.cli	*.stl/*.slc/*.cli
Printer dimension	1520mm×1320mm×1970mm (W x D x H)	1280mm×1440mm×1970mm (W x D x H)	1580mm×1750mm×2300mm (W x D x H)	3000×1700×2450mm (W x D x H)
Printer weight	1000KG (Without Resin)	700KG (Without Resin)	1300KG (Without Resin)	2300KG (Without Resin)
Power	200-240VAC,50/60Hz Single phase 2.5kW	200-240VAC,50/60Hz Single phase 2.5kW	200-240VAC,50/60Hz Single phase 2.8kW	200-240VAC,50/60Hz Single phase 4kW

Temperature requirement: 20-26°C, Humidity requirement: less than 40%, Site requirements: solid and flat surface, and no vibration around.

Open material system



Brand	Model	Color	Surface Quality	Durability	Precision	Temperature Resistance	Material Characteristics	Applicable Industries
SoonSer	S-ST9001	White	★★★★	★★	★★	★★★★	Cost Effectiveness	Prototype
SoonSer	S-LG6001	White	★★★★★	★★	★★	★★★★	High Level Of Toughness	Prototype
SoonSer	S-CL7001	Transparent	★★★★	★★	★★	★★	Transparent Material	Transparent Parts
SoonSer	S-ST9011	Yellow green	★★★★	★★	★★	★★★★	High Intensity	Prototype
SoonSer	S-ST5001	Coffee	★★★★★	★★	★★	★★★★	High-Quality Surface	Shoe Models, Tires, Etc
SOMOS	Taurus	Black	★★★★	★★★★	★★	★★★★☆	Black and High Temperature Resistance	Automotive Industry
SOMOS	6061	White	★★★★	★★	★★★★	★★★★		Prototype
SOMOS	12120	Pink	★★★★	★★	★★★★	★★★★★	Semi-Transparent and Temperature Resistance	Fluid Analysis Model
SOMOS	Perform	White	★★★★☆	★★	★★★★	★★★★★	High Temperature Resistance (265 °C)	Rapid Tooling
SOMOS	WaterShed XC 11122	Transparent	★★★★	★★	★★★★	★★	Casting Materials	Investment Casting

Zhejiang Zhongzhou Automation Equipment Co., Ltd.

📍 4th Floor, Qihang Building, Technology Park, Keqiao District, Shaoxing, Zhejiang Province, China

☎ 0575-85593448

📠 0575-85726800

🌐 www.soonser.com

✉ info@soonser.com



SoonSer



SoonSer 3D



SoonSer 3D Printer