

# Small Budget Smart Build

SoonSer Smart Series SLA 3D Printers

---

Efficiency

Performance

Intelligence

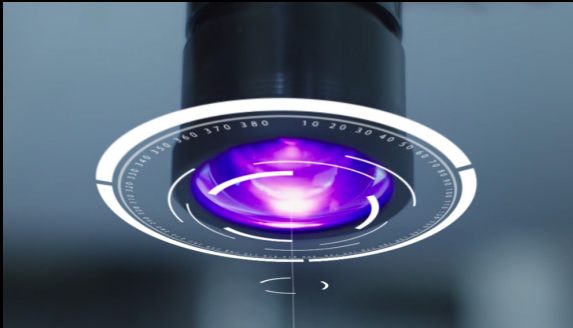


# Stable, High Resolution and Intelligent



SoonSer Smart

## High Stability



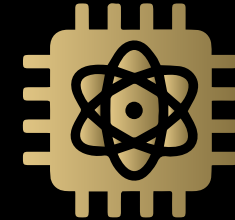
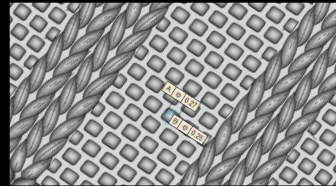
- ⦿ Integrated modularized design
- ⦿ Triaxial marble base board
- ⦿ All-in-one frame structure
- ⦿ Excellent optical instrument



SoonSer Smart

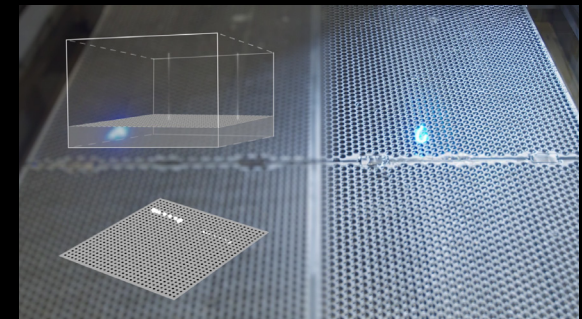
## High Accuracy and Fine Details

Print accuracy: 50 $\mu$ m  
Case study resolution:  
Vertical: 0.25mm  
Horizontal : 0.27mm



SoonSer Smart

## Intelligent and Convenient



- ⦿ Easy installation build plate
- ⦿ Replaceable resin tank
- ⦿ Remote monitoring
- ⦿ Real time laser detection

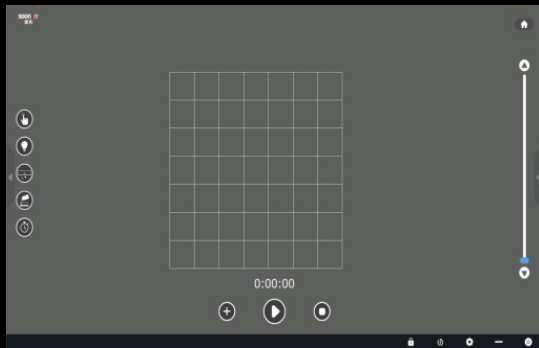
# SoonSer Smart

# Easy to Use, Safe and Environmental Friendly



SoonSer Smart

## Guided Control System



(AsterRay Software)

- Fully guided print process
- One-click preparation
- Power outage recovery print system
- One-click print



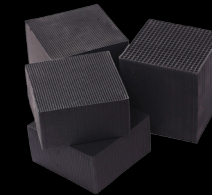
SoonSer Smart

## Accredited by Renown Authority



SoonSer Smart

## Two-tier Deodorization System



### ○ Activated Carbon

Water and high-temperature resistance, increased toughness and absorption with high temperature treatment

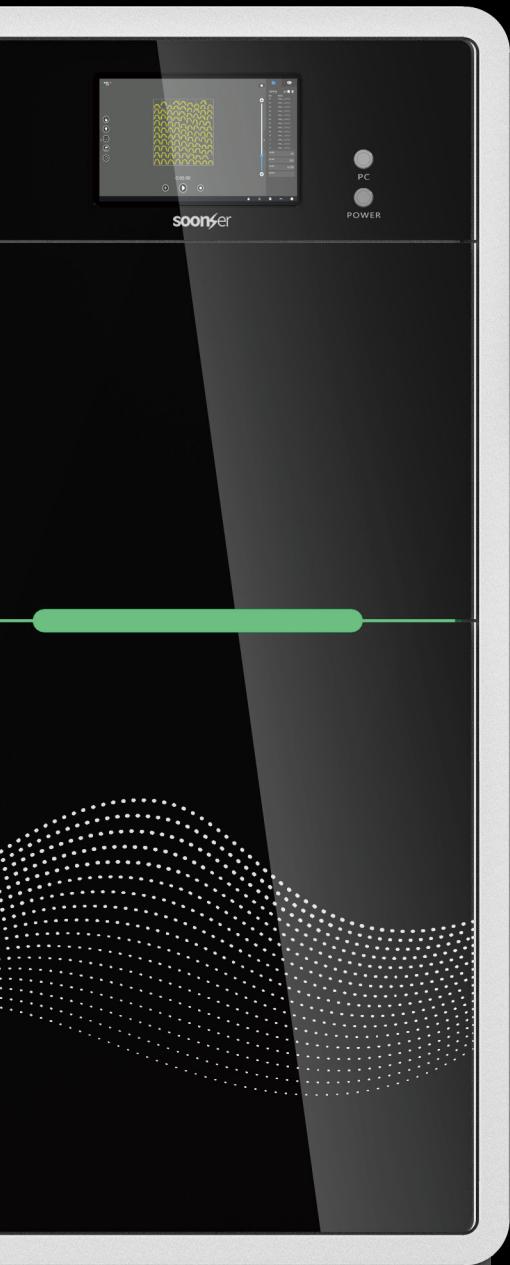


### ○ HEPA Filter

Filter particles as small as 0.3 micron

# SoonSer Smart

# SoonSer Smart Technical Specification



Model	Smart-400H	Smart-300H
Printing Dimension	400mm×400mm×300mm	300mm×300mm×250mm
Printing Accuracy	*1 ±0.1mm(L<100mm);±0.1%×L(L≥100mm);	*1 ±0.1mm(L<100mm);±0.1%×L(L≥100mm);
Layer Thickness	0.05mm-0.2mm optional	0.05mm-0.2mm optional
Scanning Speed	typical speed 6-15m/s	typical speed 6-15m/s
Printing Efficiency	*2 50-150g/h	*2 50-150g/h
Laser	Diode Pumped Solid State laser,3W	Diode Pumped Solid State laser,3W
Optical Scanning System	high speed scanning galvanometer	high speed scanning galvanometer
Optical Focusing System	F-theta lens	F-theta lens
Spot Mode	fixed facula	fixed facula
Spot Size	0.08mm	0.08mm
Motion Platform	three-axis marble base board	three-axis marble base board
Quick Easy Set-up Plate	standard configuration	standard configuration
Internal Dehumidification System	standard configuration	standard configuration
Internal Deodorization System	HEPA+activated carbon	HEPA+activated carbon
Remote Printing Speculation System	standard configuration	standard configuration
Real Time Laser Power Detection	optional configuration	optional configuration
Controlling System	AsterRay2.0	AsterRay2.0
Data Format	*.stl/*.slc/*.cli	*.stl/*.slc/*.cli
Mainframe Parameter (Recommended)	I5,2.3GHz dominant frequency. 8GB of memory;windows®7 (or later)	I5,2.3GHz dominant frequency. 8GB of memory;windows®7 (or later)
Equipment Size	800mm*980mm*1750mm(W×D×H)	800mm*980mm*1750mm(W×D×H)
Equipment Weight	350KG (without resin)	350KG (without resin)
Operating Voltage	200-240V,50/60Hz, 1.2kW(monophase)	200-240V,50/60Hz, 1.2kW(monophase)
Operating Temperature	20-26°C	20-26°C
Operating Humidity	less than 40%	less than 40%
Operating Enviroment	stable enviroment	stable enviroment

\*1 Accuracy would be affected by model size, and the deformation caused by model structure.

\*2 Printing efficiency depends on the wall thickness, structure, cover area of the model.

Zhejiang Zhongzhou Automation Equipment Co., Ltd.

4th Floor, Qihang Building, Technology Park, Keqiao District, Shaoxing, Zhejiang Province, China

☎ 0575-85593448    📠 0575-85726800    🌐 www.soonser.com    ✉ info@soonser.com



SoonSer



SoonSer 3D



SoonSer 3D Printer