

# CreatBot D600 Pro



- |              |             |                |               |                 |               |                   |                   |              |              |                |                |               |                 |                  |
|--------------|-------------|----------------|---------------|-----------------|---------------|-------------------|-------------------|--------------|--------------|----------------|----------------|---------------|-----------------|------------------|
|              |             |                |               |                 |               |                   |                   |              |              |                |                |               |                 |                  |
| Metal Hotend | 420° Hotend | High Precision | Metal Chassis | Large BuildSize | Outage Saving | Filament Checking | BuildTak Platform | Touch Screen | Linear Guide | Precise Feeder | Fully Enclosed | Auto Leveling | Hot Air Chamber | Filaments Drying |
|              |             |                |               |                 |               |                   |                   |              |              |                |                | <b>Pro</b>    | <b>Pro</b>      | <b>Pro</b>       |

## 1.Large Build Volume

D600 / D600 Pro print size **600\*600\*600mm**.

In the photo, we can see part of large format 3D printer quality inspection area. Mass production means standard high quality.

[\(Learn more about the huge 3d printer F1000 in center of the photo\)](#)



## 2.Nozzle Temperature Up To 420 °C

D600 and D600 Pro equipped with the 4th generation 1.75mm dual extruders and hotends. The left extruder equipped with 260°C hotend, It is able to print with PLA, ABS, PC, Nylon, Carbon fiber, Flexible, etc. The right extruder 420°C hotend is made of martensite steel, which is able to print high performance materials. The dual hotend is replaceable, which provide more possibility on your application.



## 3.High Precision

We exclusively research and develop the extruder feeding system support high-speed printing, and accuracy can reach high to 0.05mm, it allows to extrude filament steady without block.

Precision up to: 0.05mm Speed up to: 200mm/s



The wheel hub weighs 6kg, printed by D600 Pro !

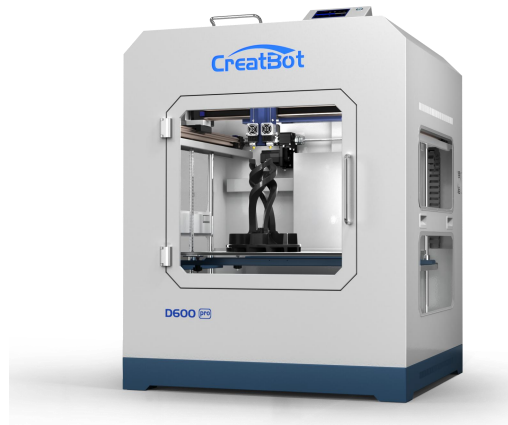
## 4.Servo Motors With Gear Reduction

- (1) .High Accuracy: closed-loop control of position, speed and torque; overcome the problem of losing step. No layer shift.
- (2) Good high-speed performance.
- (3) Stability: timeliness, fast response, no inertia, no delay.
- (4) Comfort: heat and noise are significantly reduced.



## 5.Stability

The whole-steel body not only ensure the stability when printing but also greatly extend the usage period. the optimization and cooperation of overall structure ensure the sustainable and efficient operation. The first batch of 3D printers have been working for 9 years and more than 30,000 hours. at the same time to provide constant temperature, so that the model won't deform.



## 6.Accurate Linear Guide Rail

The accurate linear rail structure can print models in accuracy high reach to 4~5 times higher than the other ordinary optical axis printers in mass market. This structure offers accurate filament feeding, so that can print large model fast and perfectly.



## 7. Fully Enclosed Chamber

The fully enclosed chamber can block all external interference. Also this frame can reduce noises, at the same time to provide constant temperature, so that the model won't deform.



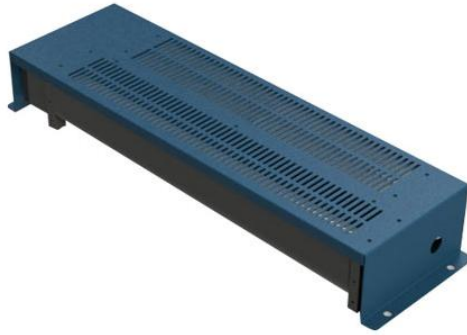
## 8. Easy Touch Screen

The printer has a 4.3" touch screen, more easy to operate. We also provide One-Key to preheat, print, home as well as other shortcut keys.



## 9. Hot Air Chamber 70°C

Hot air chamber can provide constant room temperature so that model won't deform when printing. (D600 Pro available only)



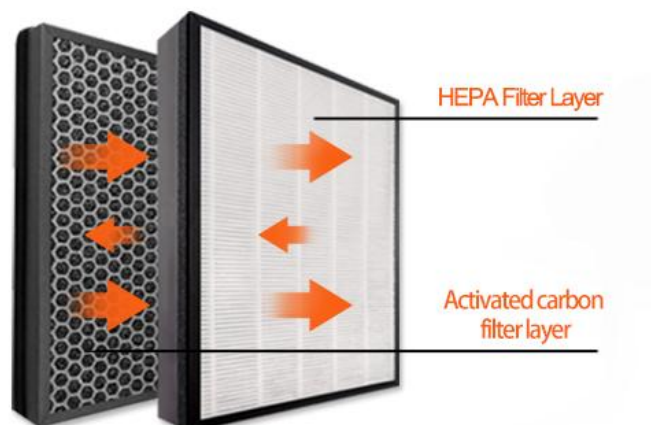
## 10.Filaments Drying Room

The function is able to dry filaments like Nylon,PC,ABS, which with high water absorption, 45°C and 65°C chamber temperature available. (D600 Pro available only)



## 10.HEPA Air Filtration

The air filter system can adsorb impurities and gases that generated by printing special filament, more safe and environmental protection which is more suitable for house, school, office space.



## 11.Outage Restored & Filament Detection

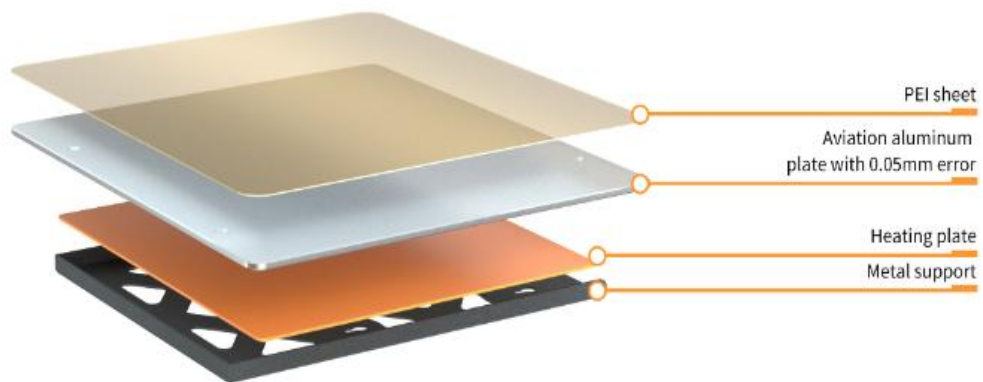
The printer will automatically memorize the current position and save print data. Lower the platform and

withdraw filament when power off suddenly. It will continue to print from the last stopped point after power's on.

The printer will avoid invalid printing by stoping print and warning when filament runs out.

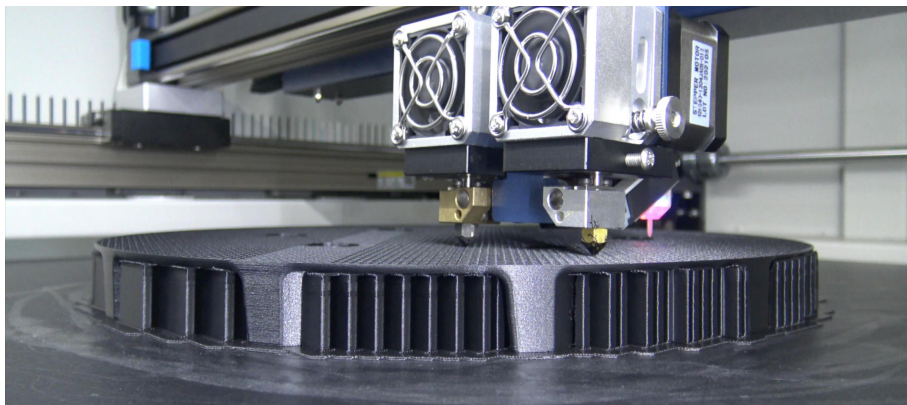
## 12. Efficient Platform

The platform surface is attached with the 3D printing special stickers, and the printer has vertical thermal conductivity so that can support high thermal efficiency. You can set the parameters to turn off the hot bed automatically after the specified number of layers.



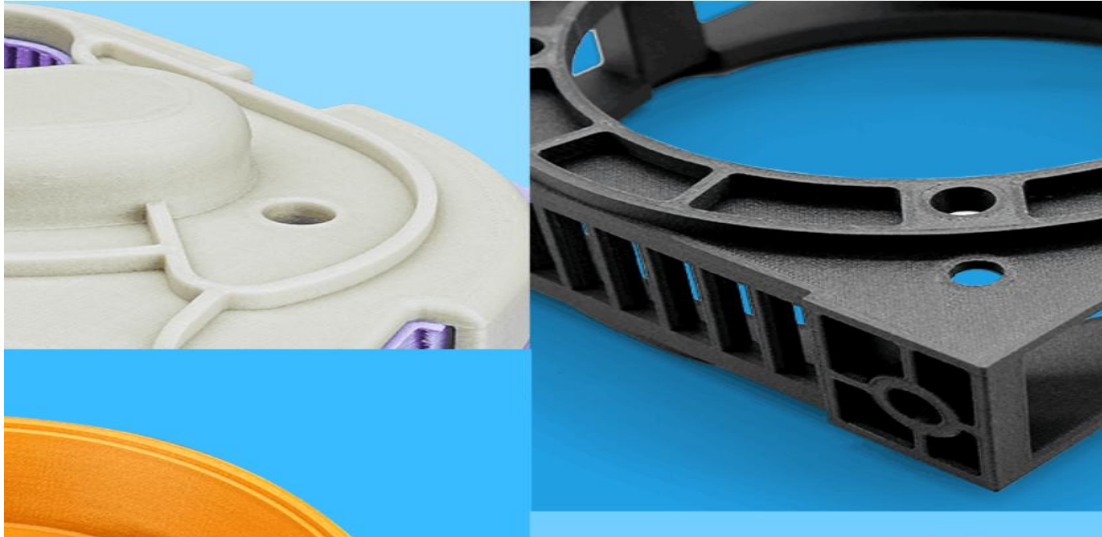
## 13.Auto Leveling Platform

Use of 25 points through the BL-Touch probe to save the level of platform flatness data at the initial, through the Z axis intelligent compensation table height in the printing process to achieve fully automatic leveling. (D600 Pro available only)



## 14. Filament & Application

We supply high quality filament. The models below are commissioned by the cultural relics protection organization and printed by D600 with 5kg big roll of PLA within 80 hours. No extra cares or change filament



## Technical Specs

Printing	
Print Technology	Fused Deposition Modeling (FDM)
Build Volume	Single Extrusion: 600*600*600 mm Dual Extrusion: 540*600*600 mm
Number of Nozzles	Double
Layer Resolution	0.05 mm
Filament Diameter	1.75 mm
Filament Compatibility	PLA, ABS, Carbon Fiber, Wood, Nylon, PC, PETG, HIPS, PP, Flexible, TPU, PVA, etc.
Nozzle Diameter	0.4mm (0.3 0.5 0.6 0.8 1.0mm)
Print File Type	STL, OBJ, AMF, Gcode
Temperature	
Ambient Operating Temperature	15 °C~32 °C
Max. Nozzle Temperature	420 °C
Max. Bed Temperature	100 °C

Max. Chamber Temperature	70 °C D600 <b>Pro</b>
Filaments Drying Temperature	45 °C/65 °C D600 <b>Pro</b>
<b>Mechanical</b>	
Construction	Power-Coated Steel, Aluminum Casting for Motion Components, POM
Build Plate	Aviation aluminum plate
Build Plate Leveling	Factory Leveled, Adjust Manually Automatic D600 <b>Pro</b>
Extruder	Directly Drive
Stepper Motors	1.8° Step Angle with 1/16 Micro-stepping
X Y Positioning Precision	5.08 μm
Z Positioning Precision	1.25 μm
<b>Speed</b>	
Best Printing speed	45 mm/s
Max. Printing speed	120 mm/s
<b>Electrical</b>	
Power Requirements	200V-240V / 50-60Hz ( D600 / D600 <b>Pro</b> )
Screen	4.3" Touch Screen with Multi-language
Rated Power	D600: 1500W, D600 <b>Pro</b> : 4900W
Storage Media	USB Disk
Connectivity	USB
<b>Software</b>	
Software	CreatWare, Simplify 3D, Cura, Slic3r, etc
Supported File Types	STL,OBJ,AMF
Operating Systems	Win7/8/10, macOS
<b>Special Function</b>	
Outage Restored	Save data when power is off
Filament Detection	Pause printing when filament run out
Automatic Shut-down	Turn off the power automatically when printing is complete